



# SAN PABLO POLICE DEPARTMENT

Monthly Statistics  
February 2017



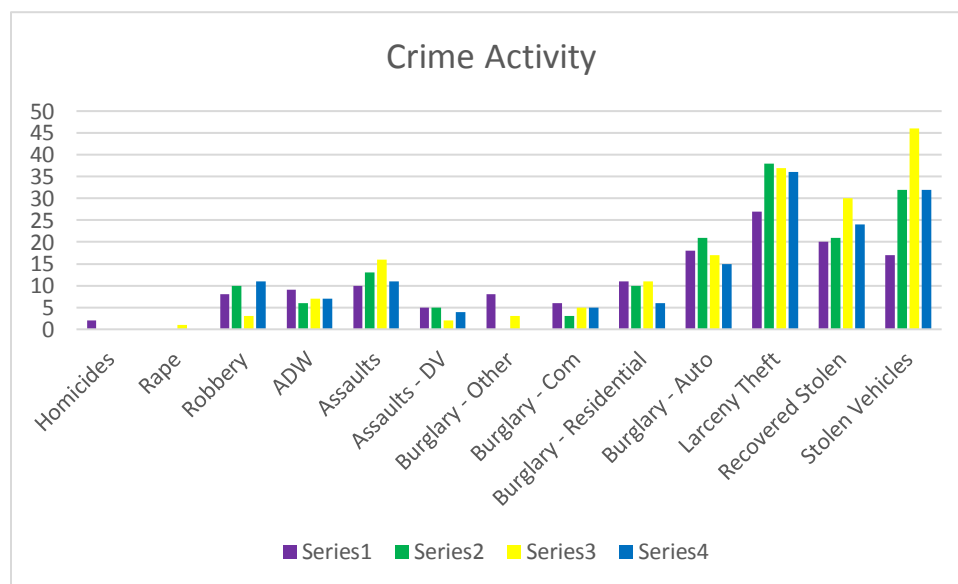
## Part 1 Crimes

### MAJOR CRIMES

	FEB 2014	FEB 2015	FEB 2016	FEB 2017	YTD 16	YTD 17	% Change
Homicides	2	0	0	0	0	0	0%
Rape	0	0	1	0	1	1	0%
Robbery	8	10	3	11	11	23	109.091%
ADW	9	6	7	7	9	18	100.000%
Assaults	10	13	16	11	34	15	-55.882%
Assaults - DV	5	5	2	4	6	12	100.000%
Burglary - Other	8	0	3	0	4	3	-25.000%
Burglary - Com	6	3	5	5	16	16	0.000%
Burglary - Residential	11	10	11	6	19	14	-26.316%
Burglary - Auto	18	21	17	15	31	33	6.452%
Larceny Theft	27	38	37	36	83	86	3.614%
Recovered Stolen	20	21	30	24	61	50	-18.033%
Stolen Vehicles	17	32	46	32	79	54	-31.646%
<b>YTD Crime Totals</b>					<b>354</b>	<b>325</b>	<b>-8.192%</b>

**\*\*Information is time sensitive and subject to change upon further analysis\*\***

**\*\*Numbers are subject to change and may not match UCR reported stats\*\***



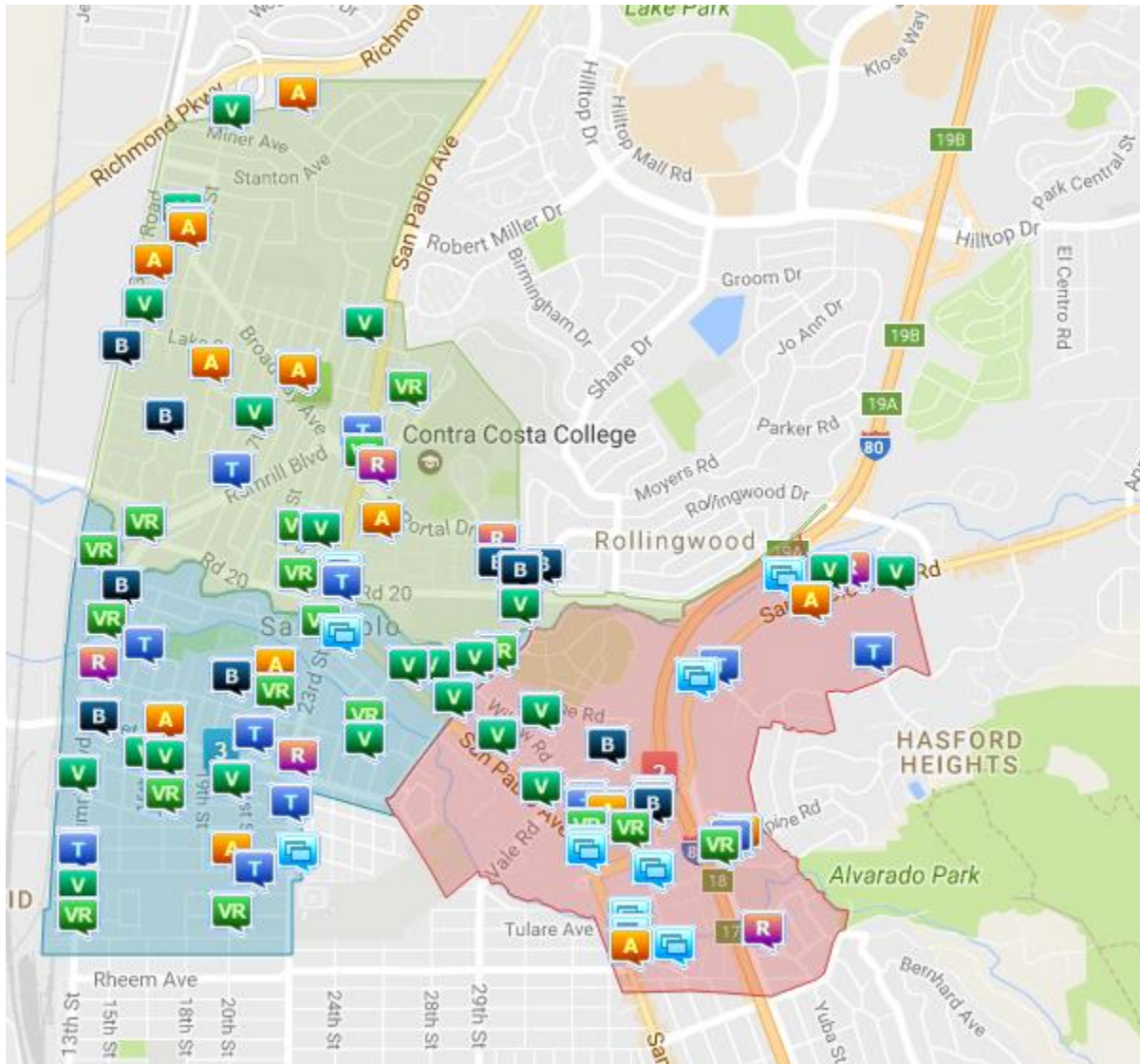


# SAN PABLO POLICE DEPARTMENT

Monthly Statistics  
February 2017



## PART 1 CRIMES

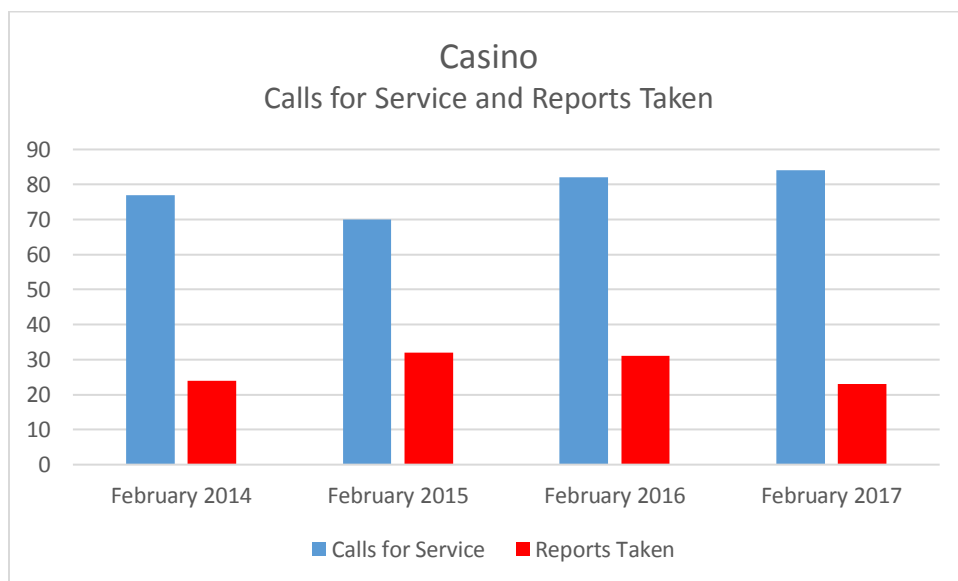
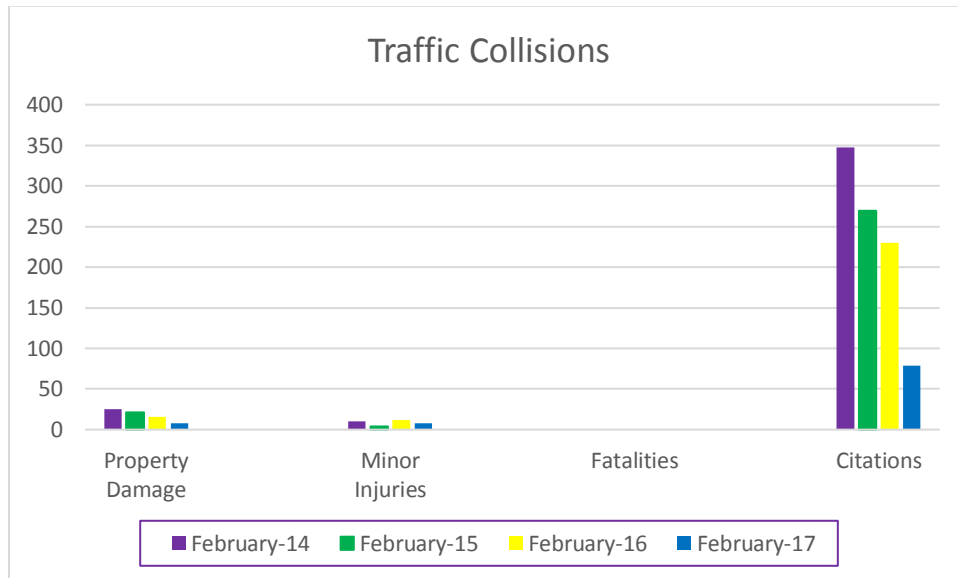


A = Assault    B = Burglary    H = Homicide    R = Robbery    T = Theft    V = Stolen/Recovered Stolen Vehicles  
Folders represent multiple Part 1 Crimes in the same reporting area; map is time sensitive and subject to change.  
Rapes are not shown to preserve victim confidentiality.



# SAN PABLO POLICE DEPARTMENT

Monthly Statistics  
February 2017





# SAN PABLO POLICE DEPARTMENT

Monthly Statistics  
February 2017



## Call for Service by Hour

From: 02/01/2017 To: 02/28/2017

Call Type: All

Hour	SUNDAY		MONDAY		TUESDAY		WEDNESDAY		THURSDAY		FRIDAY		SATURDAY		TOTAL	
	CALLS	%	CALLS	%	CALLS	%	CALLS	%	CALLS	%	CALLS	%	CALLS	%	CALLS	%
1	14	0.6	16	0.7	6	0.3	11	0.5	10	0.4	8	0.3	17	0.7	82	3.6
2	14	0.6	10	0.4	4	0.2	9	0.4	8	0.3	5	0.2	8	0.3	58	2.5
3	11	0.5	4	0.2	7	0.3	3	0.1	6	0.3	11	0.5	6	0.3	48	2.1
4	4	0.2	6	0.3	8	0.3	11	0.5	10	0.4	6	0.3	10	0.4	55	2.4
5	8	0.3	15	0.7	9	0.4	6	0.3	12	0.5	8	0.3	5	0.2	63	2.7
6	2	0.1	8	0.3	10	0.4	9	0.4	6	0.3	12	0.5	8	0.3	55	2.4
7	8	0.3	10	0.4	10	0.4	10	0.4	10	0.4	8	0.3	10	0.4	66	2.9
8	16	0.7	12	0.5	11	0.5	12	0.5	14	0.6	11	0.5	13	0.6	89	3.9
9	13	0.6	14	0.6	13	0.6	20	0.9	20	0.9	15	0.7	18	0.8	113	4.9
10	20	0.9	11	0.5	12	0.5	23	1.0	13	0.6	15	0.7	13	0.6	107	4.7
11	17	0.7	14	0.6	16	0.7	15	0.7	15	0.7	18	0.8	16	0.7	111	4.8
12	13	0.6	13	0.6	20	0.9	18	0.8	17	0.7	18	0.8	14	0.6	113	4.9
13	14	0.6	19	0.8	18	0.8	21	0.9	24	1.0	19	0.8	14	0.6	129	5.6
14	10	0.4	23	1.0	26	1.1	20	0.9	19	0.8	18	0.8	17	0.7	133	5.8
15	18	0.8	14	0.6	27	1.2	20	0.9	28	1.2	22	1.0	14	0.6	143	6.2
16	12	0.5	24	1.0	22	1.0	20	0.9	21	0.9	16	0.7	20	0.9	135	5.9
17	14	0.6	20	0.9	16	0.7	18	0.8	21	0.9	13	0.6	24	1.0	126	5.5
18	19	0.8	12	0.5	22	1.0	17	0.7	17	0.7	11	0.5	16	0.7	114	5.0
19	16	0.7	13	0.6	11	0.5	16	0.7	22	1.0	12	0.5	20	0.9	110	4.8
20	24	1.0	11	0.5	24	1.0	8	0.3	15	0.7	8	0.3	19	0.8	109	4.7
21	14	0.6	15	0.7	5	0.2	13	0.6	14	0.6	13	0.6	13	0.6	87	3.8
22	8	0.3	15	0.7	11	0.5	14	0.6	8	0.3	25	1.1	18	0.8	99	4.3
23	7	0.3	12	0.5	7	0.3	11	0.5	9	0.4	17	0.7	13	0.6	76	3.3
24	16	0.7	6	0.3	9	0.4	6	0.3	14	0.6	8	0.3	15	0.7	74	3.2
<b>Totals</b>	<b>312</b>	<b>13.6</b>	<b>317</b>	<b>13.8</b>	<b>324</b>	<b>14.1</b>	<b>331</b>	<b>14.4</b>	<b>353</b>	<b>15.4</b>	<b>317</b>	<b>13.8</b>	<b>341</b>	<b>14.9</b>	<b>2295</b>	<b>100.0</b>



# SAN PABLO POLICE DEPARTMENT

Monthly Statistics  
February 2017



## Average Response Times

### CALLS RECEIVED TO TIME OF ARRIVAL

	<b>Priority 1 Calls</b>	<b>Priority 2 Calls</b>	<b>Priority 3 Calls</b>	<b>Priority 4 Calls</b>
January 2017	5:25	12:30	8:15	19:28
February 2017	6:54	11:15	9:03	18:39

### DISPATCHED TO TIME OF ARRIVAL

	<b>Priority 1 Calls</b>	<b>Priority 2 Calls</b>	<b>Priority 3 Calls</b>	<b>Priority 4 Calls</b>
January 2017	3:03	5:33	3:24	7:34
February 2017	2:31	4:55	2:54	6:44

### COMBINED AVERAGE FOR ALL CALLS

#### CALLS RECEIVED TO TIME OF ARRIVAL

February 2016	9:47
February 2017	11:50

#### DISPATCHED TO TIME OF ARRIVAL

February 2016	4:11
February 2017	4:27

### YEAR-TO-DATE AVERAGE

#### CALLS RECEIVED TO TIME OF ARRIVAL

	<b>PRIORITY 1 CALLS</b>	<b>PRIORITY 2 CALLS</b>	<b>PRIORITY 3 CALLS</b>	<b>PRIORITY 4 CALLS</b>
2016	6:40	9:47	6:32	16:30
2017	6:17	11:53	8:39	19:03

#### DISPATCHED TO TIME OF ARRIVAL

	<b>PRIORITY 1 CALLS</b>	<b>PRIORITY 2 CALLS</b>	<b>PRIORITY 3 CALLS</b>	<b>PRIORITY 4 CALLS</b>
2016	2:45	5:14	3:09	7:08
2017	2:50	4:36	2:36	6:47

Priority 1 Calls: Require an immediate police response to preserve life or apprehend a felony suspect (e.g.: in-progress assault).

Priority 2 Calls: Are "Priority 1" calls that are 5 to 15 minutes old at the time of call.

Priority 3 Calls: Require an urgent response (e.g.: in-progress disturbances, in-custody cases, property damage collisions, etc.).

Priority 4 Calls: Require a police response in a timely manner (e.g.: cold crime reports, civil standbys, etc.).